



AUX-SRX

QUICK START INSTALLATION GUIDE FOR 2004-06 SRX WITH NAVIGATION RADIO & XM MODULE

created August 10, 2016
Revised: March 26, 2022

PRODUCT SAFETY & DISCLAIMER

READ ALL INSTRUCTIONS CAREFULLY BEFORE INSTALLING, FAILURE TO DO SO MAY CAUSE PERSONAL INJURY OR DAMAGE TO PRODUCT AND/OR PROPERTY

- This installation guide is provided as a GENERAL installation guide, some vehicles vary and may require additional steps. We do not accept responsibility for third party labor charges or modifications. Exercise due-diligence when installing this product.
- We do not accept any responsibility for vehicle damage or personal injury resulting from the installation of this product.
- Careless installation and operation can result in equipment damage.

Requirements:

XM TUNER MODULE

Introduction

Many 2004-06 Cadillac SRX vehicles may include XM, DVD, and Rear seat entertainment, GPS etc. but no "AUX" input for portable audio devices. The AUX-SRX auxiliary input jack works only in First generation SRX Navigation radios and XM Tuner module **(with or without subscription)** to provide a 3.5mm audio input jack which can be used to connect and play all kinds of audio devices including Smartphones, MP3 Players, Tablets, iPod etc.

For this cable to work, vehicle must have an XM tuner module (with or without subscription)

See **Frequent Asked question** at the end of this guide for more details.

Installation

This cable is exclusive to 2004-06 SRX with Navigation radios and XM tuner module. **(SRX without Navigation requires our [AUX-CTS](#))**

1. Using a panel removal tool, unclip and remove the top A/C vents panel (See Fig. 1)

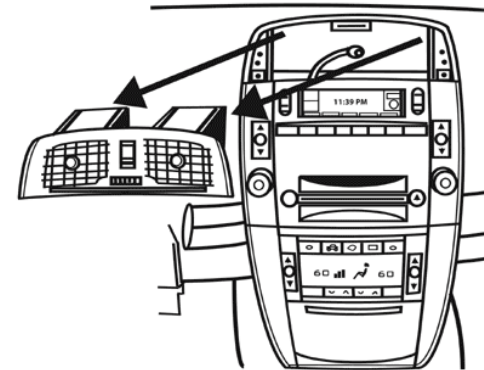


Fig. 1

2. Open ash tray and remove the tray. Extract (1) 9/32" (7mm) screw in tray cavity.
3. Using a panel removal tool, unclip and remove A/C Control/ash tray assembly below the radio (See Fig. 2)

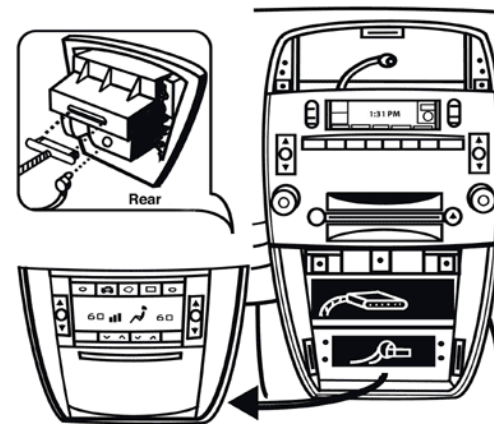


Fig. 2

4. Remove (4) 10mm bolts securing radio to dash (See Fig. 3)

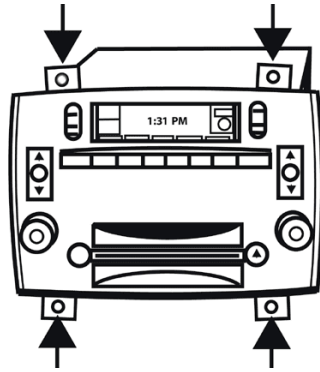


Fig. 3

5. Pull radio forward to reveal wiring (See Fig. 4)



Fig. 4
Radio

6. Disconnect **16-pin** plug from radio and connect to harness aux harness 16-pin socket (See Fig. 5)

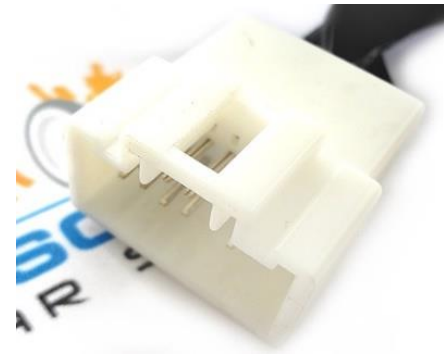
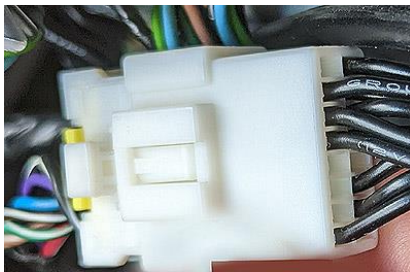


Fig.5

7. Connect harness 16-pin plug (See Fig. 6) to 16-pin connector on radio vacated in step 6 (See Fig. 4)

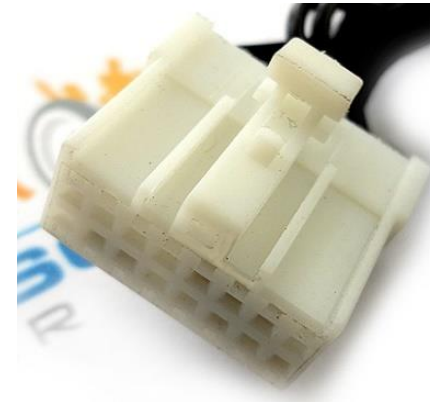


Fig. 6

8. Carefully route audio jack (See Fig. 7) to location on dash or nearby panel where it will be mounted (within 4 ft.) Location will vary based on vehicle and customer's preference.

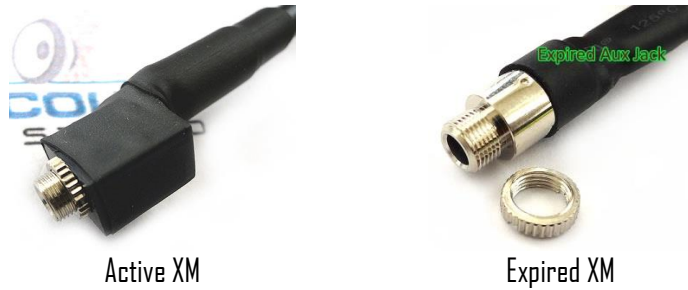
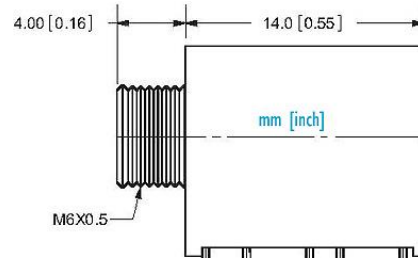


Fig. 6

9. **Optional:** Drill a 1/4" hole in dash or panel, push shaft through hole and secure with nut (See Fig. 7)



Fig. 6



Warning: Jack may be left freestanding, but to be mounted, ensure panel is no thicker than 1/8" otherwise shaft may not protrude enough to engage with nut. If necessary, use dremel, sander etc. to thin panel,

Operation

1. Turn-on Navigation radio
2. Press "**BAND**" button until **XM1/2** is displayed.
***XM subscribers.** Most recent XM channel or preview channel will play, otherwise there will be silence.*
3. Connect audio device to 3.5mm jack using the included 3 ft. Audio cable (See Fig. 9) or similar.



Fig. 9

3.5mm male to male cable

4. Play test track on audio device.
5. Use radio volume control button to set playback level.

Warning: Playlist and Track selection is ***NOT*** possible from the radio. You must use audio devices built-in controls to access audio files.

6. When in the mood for XM ("Active Subscription"), simply disconnected the 3.5mm cable **from jack** and operate XM as customary.
7. If correct operation is confirmed go ahead and reinstall the Radio

Frequent asked questions & troubleshooting

- 1. Will the AUX-SRX work on non-Navigation radios?**
NO; The AUX-SRX works on SRX Navigation Radios. Non-navigation radios require the AUX-CTS or AUX-GM3x.
- 2. My XM subscription has expired, will the AUX-SRX still work?**
YES; as long as XM Tuner (Module) is present the AUX-SRX will work. **XM Subscription NOT required; XM Tuner Module is required.**
- 3. I'm not the original owner and don't know if vehicle has XM Tuner. How can I find out without ripping the car apart?**
Turn Radio "ON". Press "BAND". If XMI/2 is grayed out, your vehicle **does not** have the XM Tuner Module required for this part to work.
- 4. Will I be able to use the Speakerphone option on my phone with this cable?**
Yes! When in a call, enter speakerphone mode on your phone at which point you will hear the caller's voice on car speakers.
- 5. Can I install this adapter without removing the radio?**
NO; The AUX-SRX connects to the back of radio. Our **AUX-GM3x** connects to XM Tuner Module at the rear of vehicle.
- 6. My vehicle does not have XM, is there an adapter I can use?**
As of last update to this file, XM Tuner Module is a required for all CTS/SRX Adapters to work.
- 7. After disconnecting audio device, there is a humming sound coming from the speakers, how can I fix this?**
Always disconnect audio device from the jack end of audio cable. In other words, jack must be empty otherwise audio cable is prone to interference.
- 8. What is the difference between "Subscribed" and "Expired" XM options?**
XM Subscribers or to retain the Preview channel must select "Subscribed". If expired (no plans to subscribe or retain Preview Channel), select "Expired".
Warning!!! If you purchase the "Expired" version and subscribe at a later date, XM Playback will not be possible until this cable is disconnected and

because of that we recommend purchasing "**Subscribed**" version which works with or without Subscription.

Disclaimer

- This product has no affiliation with Cadillac
- We're not liable for misuse of this product.
- We recommend professional installation

Email support@discountcarstereo.com

© 1995-Mar-22 Discount Car Stereo, Inc. All rights reserved. Information in this document is subject to change without notice. Other products and companies referred to herein are trademarks or registered trademarks of their respective companies or mark holders.