



## A2DIY-CHRY02

### QUICK START INSTALLATION GUIDE FOR CHRYSLER CD CHANGER CONTROLLING RADIOS (MODE BUTTON)

created August 10, 2019

Revised: June 13, 2022

## PRODUCT SAFETY & DISCLAIMER

READ ALL INSTRUCTIONS CAREFULLY BEFORE INSTALLING, FAILURE TO DO SO MAY CAUSE PERSONAL INJURY OR DAMAGE TO PRODUCT AND/OR PROPERTY

- This installation guide is provided as a GENERAL installation guide, some vehicles vary and may require additional steps. We do not accept responsibility for third party labor charges or modifications. Exercise due-diligence when installing this product.
- We do not accept any responsibility for vehicle damage or personal injury resulting from the installation of this product.
- Careless installation and operation can result in equipment damage.

## Requirements:

CD CHANGER CONTROLLING RADIO – Mode button plus up/down arrows on present I and 5

## Introduction

The A2DIY-CHRY02 wirelessly connects mobile devices to Chrysler radio system allowing for Smartphone hands-free calls, music streaming, turn-by-turn navigation, and more. A wireless connection means no wires, clutter or complicated setup. The A2DIY-CHRY02 plug-n-play solution connects to the 10-pin CD changer/Sat radio port which guarantees to best possible sound. In addition to Bluetooth, users can also connect and play other devices through the module AUX input jack and use included wireless remote to switch between sources, adjust volume, change tracks and more.

**See Frequently Asked question** at the end of this guide for details.

## Installation

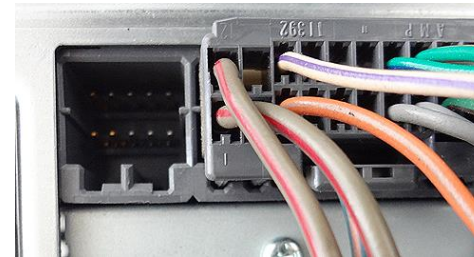
Radio must be removed from dashboard to gain access to the connectors. Vehicle specific radio removal is not part of this guide; however, they are available upon request.

With radio out:

1. Connect installation harness 10-pin plug (See **Fig. 1**) to radio 10-pin connector, (See **Fig. 2**)  
*Any factory option (satellite radio, CD changer etc.) already in place, must be permanently disconnected.*



**Fig. 1**  
10-pin plug



**Fig. 2**  
Radio 10-pin connector

2. Connect installation harness 8-pin plug (See **Fig. 3**) to module 8-pin connector (See **Fig. 4**)



**Fig. 3**  
Installation harness



**Fig. 4**  
Module

3. Connect included 3.5mm male-male cable (See **Fig. 5**) to module "AUX" input jack (See **Fig. 6**), and route cable other end to where audio device will reside (within 3 ft.)



**Fig. 5**



**Fig. 6**

4. Install microphone to visor or headliner using included visor clip (See **Fig. 8a**).



**Fig. 8**  
Microphone



**Fig. 8a**  
Visor clip

5. Use clip to install microphone (See **Fig. 8**) to visor or location of choice and route cable down pillar, under dashboard toward module location and connect to module "MIC" input (See **Fig. 6**)  
**Excursive caution when routing microphone so to not damage the cable and ensure no ventilation duct is pointed towards microphone.**



## Optional charging kit (not for thumb drives etc.)

Add this charging kit to your A2DIY-CHRY02 module and keep those power hungry devices charged while on the road.

Should you decide to add it, we suggest one of 3 connecting options:

**A. Flush to dash/panel requires drilling a 3/4" hole**

**B. Flush with Support bracket** (Mount USB terminal wherever your installation demands without drilling)

**C. USB port-** (default)

### A. Flush to Dash or Panel (drilling required)

1. Drill a 3/4" hole in the dash or panel using a step drill bit or equivalent (See Fig. 10)



**Fig. 10**  
Step drill bit

2. Insert supplied 3ft. USB male terminal (See Fig. 11) through hole created in step 1 and connect to module USB port (See Fig. 12)



**Fig. 11**  
Flush mount 3 ft. USB cable



**Fig. 12**  
Module USB port

3. Snap USB head (See Fig. 13) in place and flush with mounting surface (See Fig. 14)



**Fig. 13**  
USB head



**Fig. 14**  
Flush mounted to dash

4. Tuck and secure any extra wire from moving parts and test operation

## B. Bracket Mount (No drilling)

1. Locate a flat surface at location of choice within 3.2 ft. of module and mount USB support bracket (See Fig. 15) to surface using adhesive/tape or screws (included).



**Fig. 15**  
USB mounting bracket

2. Insert male terminal through hole in bracket (See Fig. 16) and connect to module USB port (See Fig. 12)



**Fig. 16**

3. Snap USB head (See Fig. 16) to bracket until flush (See Fig. 17)



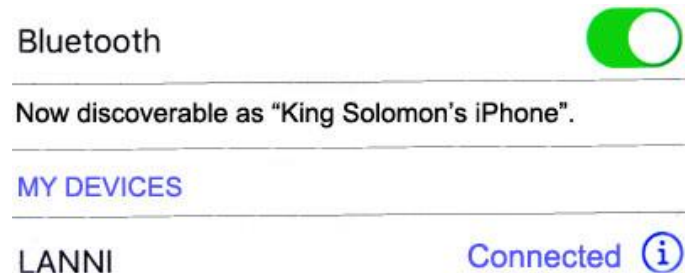
**Fig. 17**

4. Tuck and secure any extra wire away from moving parts and test operation (*See Bluetooth Pairing and Connection*)

## Pairing and connection

Pairing varies among devices but basic steps are the same. This process is done upon initial install and will not have to be repeated.

1. Turn ignition and radio "ON"  
*LED inside module peephole will flash rapidly (pairing mode)*
2. Open device (e.g. Smartphone) **Bluetooth Settings**
3. Verify **Bluetooth** is enabled otherwise turn it on
4. Tap **Scan or search for devices**.
5. Wait for Bluetooth device name (See Fig. 18) to appear and tap it. *Once paired confirmation tone is heard on car speakers*



**Fig. 18**

**Warning:** Caller ID and text are **not shown on radio display**. Operate Bluetooth device via wireless remote control, VR (voice recognition) or device built-in controls. Radio buttons can be used to adjust playback level

## **NEW** Media button

### **Pairing:**

Ensure Bluetooth is enabled on your device (e.g. Smartphone/Tablet etc.)

Press and hold pause/play until Blue LED begin flashing

Scan smartphone for available devices and select **BT009** from list. (Blue LED turns off).



### **Installation:**

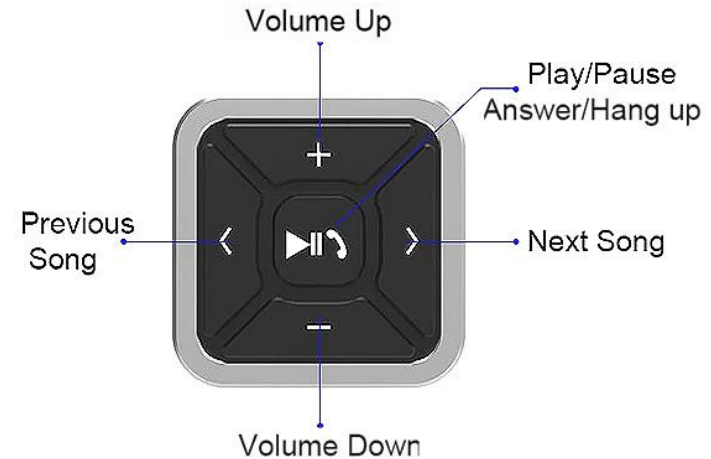
Attach the button to steering wheel (includes holder) or attach to dashboard using included double sided tape – your choice.

Because the media button pairs with your Smart device, it can also be used at home, in the park or wherever you decide to play your tunes.

### **Operation:**

Once paired with smart device (e.g., Phone, Tablet, etc.), users may perform the following functions on iOS with Bluetooth 3.0 and later or Android 4.0 or later.

**Media button functions applies to smartphone NOT Chrysler radio.**



### **Charging:**

Media button built-in rechargeable 200mAH battery may last up to 10 days.

Connect included USB cable to charge charging port at the back.

Red LED indicates charging; a full charge is reached after 2 hours at which time LED turns off.



## Bluetooth operation

1. Turn ignition and radio "ON"
2. Press "MODE" button on radio to enter Bluetooth mode (See Fig. 19)



Fig 19

3. Launch streaming application (e.g. Pandora, Apple music etc.)
4. Use device built-in control or Bluetooth media button to change tracks, adjust device volume, pause/play etc.
5. Place test phone call or ask someone to call. Press media button "Pause/Play" button to accept call and end call.  
**Use media button Pause/Play to switch between AUX playback and Bluetooth.**
6. If correct operation is confirmed go ahead and reinstall radio.

**Warning:** Use smartphone built-in controls to access applications

### Notes:

1. If playback is distorted or low, adjust volume on Bluetooth device.
2. On incoming calls, ring tone plays on car speakers
3. Bluetooth range is approximately 30 ft. make sure device is within range
4. Music streaming has priority.
5. \*media button does not control Chrysler radio/Aux functions. Use radio buttons as customary and AUX device buttons for music selection and controls.

**If successful go ahead and reinstall radio**

## Frequent ask questions & troubleshooting

1. **Does the AZDIY-CHRY02 work on all Chrysler 10-pin radios?**  
**NO;** Works on Chrysler CD changer ready radios with "MODE" button, **DISC up** on Preset #1, DISC down on present #5 (these buttons indicate radio has cd changer controls). **If radio has only a "MODE" button, it is not compatible.**



Fig. 20

2. **My "rounded face" has a CD-C button. Will the AZDIY-CHRY02 work?**  
**NO,** Radios with CD-C button and 8-pin port requires our [AZDIY-CH98](#).
3. **My 2002 radio does not have a Mode button, will this adapter work?**  
**NO;** Radios without "MODE" button are NOT compatible. See question # 1.
4. **Will I have to disconnect Satellite radio or remote CD changer?**  
**YES,** any factory option already in place must be disconnected.
5. **Will I be able to play aux device (MP3 player etc.) without pairing smartphone?**  
**YES,** AUX input is enabled automatically. It is not necessary to pair smartphone in order to listen to an aux device. Simply connect aux device, press Mode button on radio. To switch to music streaming; press media Pause/play button.

### Disclaimer

- This product has no affiliation with Chrysler
- We're not liable for misuse of this product.
- We recommend professional installation

For support email [support@discountcarstereo.com](mailto:support@discountcarstereo.com)

© 1995-Jun-22 Discount Car Stereo, Inc. All rights reserved. Information in this document is subject to change without notice. Other products and companies referred to herein are trademarks or registered trademarks of their respective companies or mark holders.