



BT3-CHRY02

QUICK START BLUETOOTH INSTALL GUIDE FOR 2002-08 CHRYSLER RADIOS WITH MODE BUTTON

created August 10, 2024
Revised: August 25, 2024

PRODUCT SAFETY & DISCLAIMER

READ ALL INSTRUCTIONS CAREFULLY BEFORE INSTALLING, FAILURE TO DO SO MAY CAUSE PERSONAL INJURY OR DAMAGE TO PRODUCT AND/OR PROPERTY

- This installation guide is provided as a GENERAL installation guide, some vehicles vary and may require additional steps. We do not accept responsibility for third party labor charges or modifications. Exercise due-diligence when installing this product.
- We do not accept any responsibility for vehicle damage or personal injury resulting from the installation of this product.
- Careless installation and operation can result in equipment damage.

Requirement

Radio with 10-pin CD changer port and MODE button

Introduction-

Many with older cars looking for a simply way to play audio devices without replacing the radio will be pleased to find this solution. The BT3-CHRY02 module provides a Bluetooth solution for Smartphone, Kindle, Tablet with HPF and A2DP profiles. A wireless connection means no wires, clutter or complicated setup. The BT3-CHRY02 music streaming solution is applicable to select 2002-08 Chrysler, Dodge, Jeep rounded face radios with **MODE** and 10-pin CD/SAT port (See Fig. 2). A direct connection guarantees the best possible sound on car speakers and replaces Chrysler CD changer/Satellite radio (if present).

Warning!! All compatible radios must have a "MODE" button on faceplate and 10-pin (square) port on the rear. The BT3-CHRY02 is NOT compatible with radios with CD-C button and 8-pin (rounded) port on the rear (except RAD radio sale code with 10-pin port).

See Frequently Asked question at the end of this guide for details.

Installation

Radio removal required to gain access to the connectors. Vehicle specific radio removal is not part of this guide; however, these may be available upon request.

1. Connect module 10-pin plug (See Fig. 1) to radio 10-pin connector (See Fig. 2)

Note: If the 10-pin socket is occupied (e.g. remote CD change, satellite radio, or DVD); the plug must be disconnected and device will no longer function.



Fig. 1

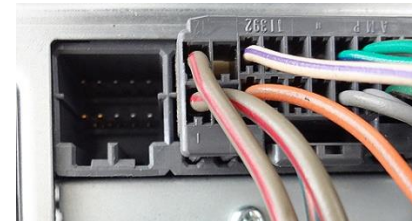


Fig. 2

10-pin connector

2. Secure module and proceed to next step
3. Secure microphone to headliner or visor with included clip (See Fig. 3)
4. Route microphone plug/cable (10 ft. long) down side pillar, under steering column and into radio cavity.
5. Connect microphone to "MIC" input jack on module. (See Fig. 4)

Wind noise (Convertibles) will negatively affect phone audio. Users are advised to install microphone away from wind/ventilation ducts etc.



Fig. 3



Fig.4

USB- charging

The module built-in USB port (See Fig. 5) provides 5V/ 2A charging power. Simply connect your device directly or purchase our dash mount USB extension cable seen in Fig. 6 and available [here](#). **The USB port is for charging only.**



Fig. 5



Fig. 6

Pairing

Pairing process varies among devices but basic steps are the same. This process is done upon initial install and will not have to be repeated each time you enter/exit vehicle.

1. Turn Ignition and radio "ON"
2. On A2DP device: go to **Settings, Wireless & Networks, Bluetooth Settings**
3. Select **Bluetooth** and turn on.
4. Then select Bluetooth settings
5. Tap **Scan for devices**.
6. Wait for Bluetooth device name to appear (See Fig. 7) and select it. *Blue LED glows steady (paired)*

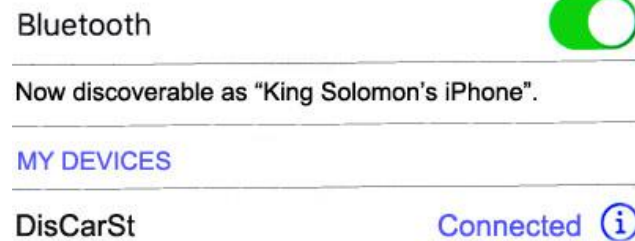


Fig. 7

Bluetooth operation

1. Turn ignition to "ACC" and turn the radio ON
2. Press "MODE" button on radio to enter Bluetooth mode.
The radio screen will change to: Disc x Track x as seen in Fig. 8



Fig. 8

Warning: Playlist, Artist name, Track number etc. are *NOT* available for these Chrysler radios.

3. Launch streaming application (e.g., Spotify, Apple music etc.) on smart device

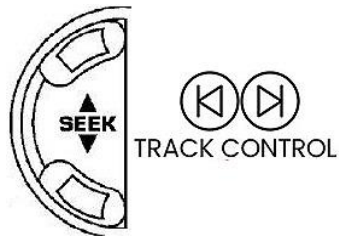


Fig. 9

4. Press the radio or steering wheel "SEEK" button. Seek **down** to previous track or **up** to next track. (See Fig. 9). You may also use built-in controls on smart device.
5. Place test call or ask someone to call.
6. To accept, press "SEEK DOWN" on radio or steering wheel (See Fig. 10)
7. To reject, press "SEEK UP" on radio or steering wheel (See Fig. 10)



Fig. 10

8. Use radio or steering wheel volume buttons to adjust phone call level.
Note: Some smartphones include settings for call volume. Please ensure this setting is not turned "OFF".

Notes:

1. If playback is distorted or low, adjust volume on Smartphone.
2. Bluetooth range is approximately 20 ft. Ensure smart device is within range

If successful go ahead and reinstall radio

Frequent ask questions & troubleshooting

1. Will the BT3-CHRY02 work on all radios with 10-pin connector?

NO; the Chrysler, Jeep & Dodge radios in addition to a 10-pin connector **MUST** also have a **"MODE"** button, **DISC up** and **DISC down** on presets 1 and 5 on the radio faceplate or as seen in Fig. 11.



Fig. 11

2. Can I use the BT3-CHRY02 to make/receive phone calls?

YES; The **BT3-CHRY02** supports Bluetooth audio streaming (A2DP) and Hands-free (HFP) profile.

3. Does the BT3-CHRY02 work on Chrysler RBI Navigation radio?

The BT3-CHRY02 firmware supports the RBI, however older firmware is not supported. Unfortunately, we can't confirm the firmware in your RBI but if the BT3-CHRY02 fails to emulate, you may return for a [refund](#).

4. I'm I required to purchase optional USB extension in order to charge my phone?

NO. The optional USB extension cable is offered to install the USB port into the dash, console, glove box etc. Feel free to connect your devices charging cable directly to USB charging port on module.

5. Do you offer a similar module that supports music playback from a Flash drive?

YES. Our [BT6-CHRY02](#) provides support for Hands-free calls, audio streaming, AUX input and Flash drive

6. Will I have to disconnect CD changer or satellite radio?

YES, the BT3-CHRY02 uses the 10-pin port. Any and all factory add-ons including RSE (DVD) will need to be disconnected.

7. Can I use radio buttons to control song?

YES; Unlike other offerings, the **"SEEK"** buttons on radio or steering wheel can be used to perform select Bluetooth functions.

Disclaimer

- This product has no affiliation with Chrysler
- We're not liable for misuse of this product.
- We recommend professional installation

Email support@discountcarstereo.com

© 1995-Aug-24 Discount Car Stereo, Inc. All rights reserved. Information in this document is subject to change without notice. Other products and companies referred to herein are trademarks or registered trademarks of their respective companies or mark holders.