

Courtesy of: DiscountCarStereo.com
Serving the internet community since 1995



BTA-CTS

QUICK START AUDIO STREAMING INSTALL GUIDE FOR CADILLAC CTS/SRX WITH XM MODULE (U2K)

created August 16, 2024
revised: September 16, 2024

PRODUCT SAFETY & DISCLAIMER

READ ALL INSTRUCTIONS CAREFULLY BEFORE INSTALLING, FAILURE TO DO SO MAY CAUSE PERSONAL INJURY OR DAMAGE TO PRODUCT AND/OR PROPERTY

- This installation guide is provided as a GENERAL installation guide, some vehicles vary and may require additional steps. We do not accept responsibility for third party labor charges or modifications. Exercise due-diligence when installing this product.
- We do not accept any responsibility for vehicle damage or personal injury resulting from the installation of this product.
- Careless installation and operation can result in equipment damage.

Requirements:

XM Tuner module (U2K) with or without subscription

Introduction

Your 1st generation Cadillac CTS or SRX still drives great but lack ability to stream music and other application. Our new and improved BTA-CTS (formerly A2D-CTS) music streaming module allows these vehicles owners to stream music applications from Smartphone, Tablet, Kindle etc. through the factory radios XM port. **For the BTA-CTS module to work, the compatible vehicle must have an XM module (expired or active subscription).**

Note: If XM is currently expired with no intentions of ever activating; then select expired. An AUX input jack is then provided to which users may connect and play portable audio devices (e.g. MP3, Satellite radio kits, iPods etc.) If XM is currently active, select "SUBSCRIBED" to allow the service to remain uninterrupted.

A wireless connection means no wires, clutter or complicated setup. **See Frequently Asked question** at the end of this guide for details.

Installation- to headunit

Radio removal required to gain access to the connectors.

1. Using a panel removal tool, unclip and remove the top A/C vents panel (See Fig. 1)

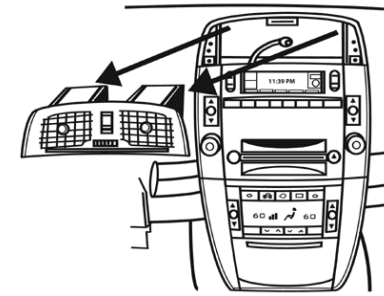


Fig. 1

2. Open ash tray and remove tray. Extract (1) 9/32" (7mm) screw in tray cavity.
3. Using a panel removal tool, unclip and remove A/C Control/ash tray assembly below radio (See Fig. 2)

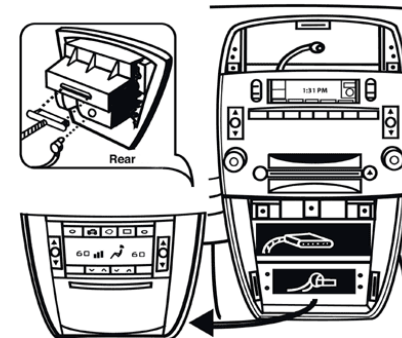


Fig. 2

4. Remove (4) 10mm bolts securing radio to the dash (See Fig. 3)

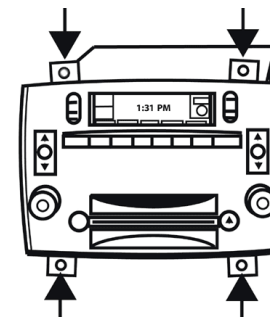


Fig. 3

5. Pull radio forward to reveal connectors (See Fig. 4)



Fig. 4

6. Press locking tab to disconnect 8-pin ISO plug (gray) from radio (See Fig. 4) and connect to 8-pin ISO connector (black) on module harness (See Fig. 5).



Fig. 5

8-pin connector

7. Connect 8-pin ISO plug (black) in Fig. 6 to radio chamber vacated by gray plug in step 6



Fig. 6

8. Connect 16-pin plug on module harness (See Fig. 7) to 16-pin socket on module (See Fig. 8)

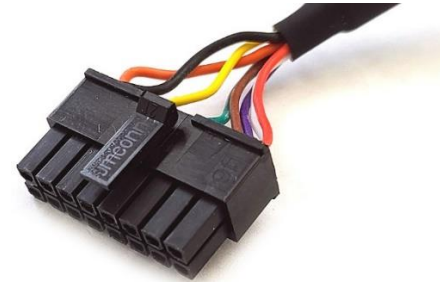


Fig. 7



Fig. 8

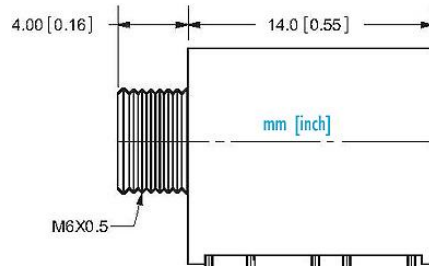
9. If subscription has expired: Drill a 15/64" or 1/4" hole in dash or panel, push shaft on audio jack (See Fig. 9) through and secure with nut (See Fig. 10)



Fig. 9



Fig. 10



Warning: Jack may be left freestanding, but to be mounted, ensure panel is **less than 4mm thick** otherwise shaft may not protrude enough to engage with nut. If necessary, use dremel, sander etc. to thin panel or choose alternate mounting location.

10. Secure module and proceed to next step

Optional USB extension cable installation

Note: 1. Optional USB dash mount extension cable (Fig. 12) is not required for operation, however it extends USB charging port (See Fig. 13) to dashboard, glovebox etc.

2. The USB port supports charging only

1. Drill a 3/4" hole to dash or panel using a step drill bit or equivalent (See Fig. 11)



Fig. 11

2. Fish USB cable terminal (See Fig. 12) through hole created in step 1 and plug into USB port on module (See Fig. 13)



Fig. 12
USB cable



Fig. 13

3. Snap header (See Fig. 14) to surface until flush (See Fig.15)



Fig. 14



Fig. 15

Pairing

Pairing varies among devices but basic steps are the same. This process is done upon initial install and will not have to be repeated.

1. Turn Ignition and radio "ON"
Go to device: *Settings, Wireless & Networks, Bluetooth Settings*
2. Select *Bluetooth* and turn on.
3. Tap *Scan for devices*.
4. Wait for Bluetooth device name to appear and tap it. (See **Fig. 16**)

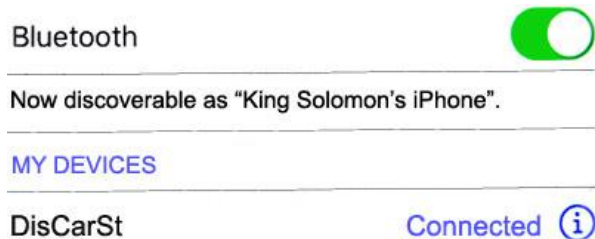


Fig. 16

Operation

1. Turn ignition and radio "ON"
2. Press "**BAND**" button on AM/FM radio until XM1 or XM2 is displayed
3. Launch audio device streaming application.
4. Set audio device volume to 80%-- adjust as needed based on playback quality (reduce if distorted).
5. Use radio volume button to set playback level.
6. Use wireless remote buttons or device built-in controls to change tracks, adjust device volume, pause etc. (See **Fig. 17**)
7. To listen to XM (if subscribed) or AUX device (if not subscribed), press **Pause/Play** on remote control.
8. To switch back to streaming, press **Pause/Play** button on remote control

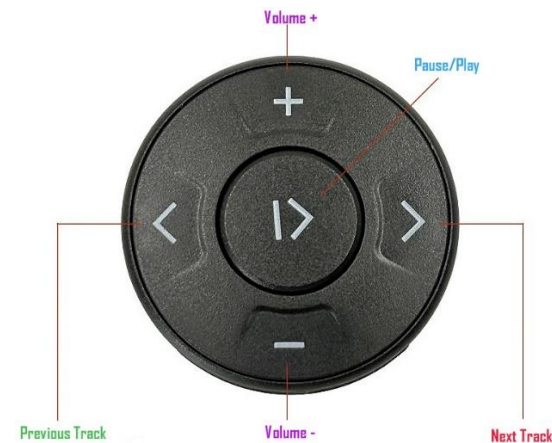


Fig. 17

9. If correct operation is confirmed go ahead and reinstall radio.
Note: If XM has expired with plans to renew at a future date; you must purchase "Subscribed" version otherwise XM will not play upon activation.

Frequent ask questions & troubleshooting

- Will the BTA-CTS work in vehicles with Navigation?**
YES; Works with CTS Navigation radios. NOT for SRX Navigation radios
- My XM subscription has expired; will the BTA-CTS work?**
YES; as long as XM tuner remains in vehicle.
Note: If XM is expired but plan to renew at a future date; select "Subscribed" otherwise XM will not play upon activation.
- My XM subscription is active; will the BTA-CTS work?**
YES; XM subscription remains active. (Select "Subscribed" from drop-down)
- I don't know if my vehicle has XM tuner module. How can I find out without ripping the car apart?**
Turn radio "ON", press "BAND" button repeatedly to cycle through AM/FM/XM1/XM2. If only AM/FM is displayed, your vehicle does not have the required XM module.
- Do I need to check wiring on 8-pin gray plug prior to ordering for my 2004-05 CTS)?**
YES. Because sometime between 2004-05 Cadillac changed wiring on the 8-pin (gray) plug. For more specifics. **go to question #8**
- Can I install the BTA-CTS without removing the radio?**
NO; The BTA-CTS connects to the back of the dash and radio removal is required.
- Can I use the BTA-CTS for hands-free calls?**
NO; The BTA-CTS supports streaming only via Bluetooth. For hands-free calls purchase our [BTH-CTS](#)
- Sometime in 2005 Cadillac made a slight change to the radio wire harness. This change also affects late 2004 production dates. If you own a 2004-05 CTS, check wiring on radio's gray plug (Fig. 13/14) to determine proper wiring on your 2004-05 CTS, otherwise module may only play on right or left side. Here is how:**
The location of TAN/WHITE wire determines model year selection at checkout:
PIN 4 = TAN/WHITE (See Fig. 18) select 2003-04
PIN 3= TAN/WHITE (See Fig. 19) select 2005-07

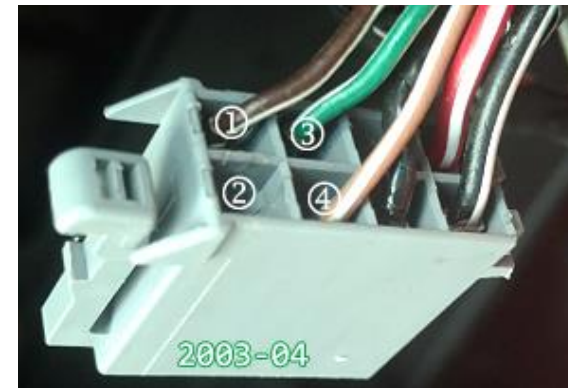


Fig. 18

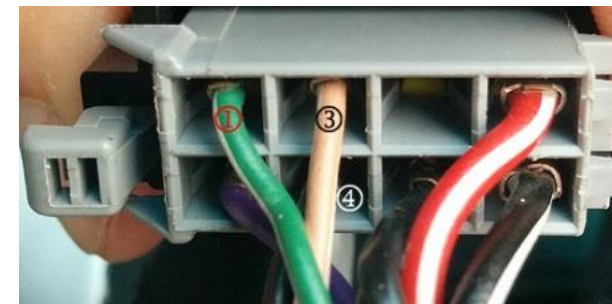


Fig. 19

Warning for 2004-05 CTS only: When ordering, please select vehicle model year-based on TAN/WHITE wire position. **Failure to verify this wiring change (2004-05 CTS) will result in audio playback on one side and will require wiring modification.**

Disclaimer

- This product has no affiliation with GM
- We're not liable for misuse of this product.
- We recommend professional installation

For help, please email support@discountcarstereo.com

© 1995-Sep-24 Discount Car Stereo, Inc. All rights reserved. Information in this document is subject to change without notice. Other products and companies referred to herein are trademarks or registered trademarks of their respective companies or mark holders.