

Courtesy of: DiscountCarStereo.com
Serving the internet community since 1995



BTH-MBCD

QUICK START BLUETOOTH INSTALLATION GUIDE FOR SELECT 1994-98 MERCEDES BENZ WITH CD CHANGER

Created: December 1, 2019

Revised: December 1, 2024

PRODUCT SAFETY & DISCLAIMER

READ ALL INSTRUCTIONS CAREFULLY BEFORE INSTALLING, FAILURE TO DO SO MAY CAUSE PERSONAL INJURY OR DAMAGE TO PRODUCT AND/OR PROPERTY

- This installation guide is provided as a GENERAL installation guide, some vehicles vary and may require additional steps. We do not accept responsibility for third party labor charges or modifications. Exercise due-diligence when installing this product.
- We do not accept any responsibility for vehicle damage or personal injury resulting from the installation of this product.
- Careless installation and operation can result in equipment damage.

Requirements

1994-98 MERCEDES BENZ WITH FUNCTIONING 6 CD CHANGER

INTRODUCTION

Older Mercedes vehicle owners who want to keep their cars as original possible (including radio and CD changer) will be pleased to know they can now link up their Smartphones to make/receive phone calls without sacrificing CD playback. The BTH-MBCD (formerly A2DIY-MBCD) adds **Bluetooth Hands-Free & audio streaming** from any Smartphone or tablet with A2DP and HPF profiles and options to:

1. Retain CD changer playback or
2. AUX input (instead of changer playback) which allows users to connect and play portable audio devices such as Mp3 players, satellite radio kit, iPods etc. (CD changer remains connected but will no longer play)

Warning: Works in 1994-98 Mercedes with MC3194, 3196, 3296 CD changers which remains connected and functional. **Will not work if CD changer is missing or malfunctions in any way**—see our [BT3-MB](#) instead.

See **Frequently Asked question and comparison chart** at the end of this guide.

INSTALLATION

Radio must be removed from dash to gain access to connectors. Removal tools (See **Fig. 1**) required and sold separately.

Tip: Due to cavity space constraints; we recommend placing module/wiring in space behind the A/C module allowing for easy re-installation of the radio.

1. Slide keys into radio slots to detent position. Withdraw radio by pulling keys forward. See **Fig. 2**

Click [here](#) for more detailed radio removal instruction



Fig. 1



This radio **does not apply**.



Fig. 2

2. Disconnect 10-pin CD plug (See **Fig. 3**) from radio (C) socket (See **Fig. 4**)
3. Connect 10-pin CD plug to matching 10-pin socket on install harness (See **Fig. 5**)



Fig. 3

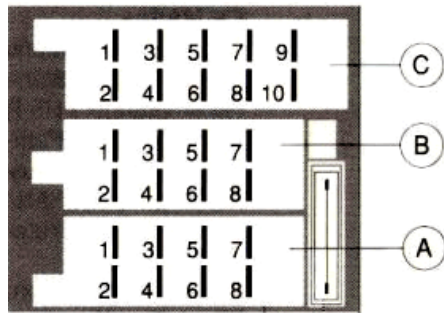


Fig. 4

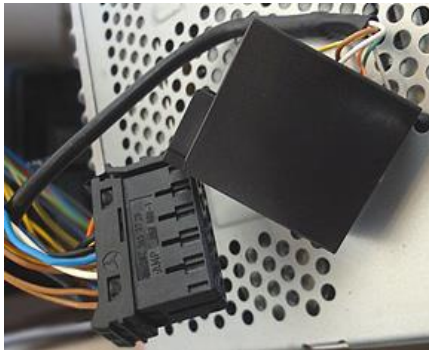


Fig. 5

4. Connect 10-pin plug from installation harness (See Fig.6) to radio (C) socket vacated in step 2



Fig. 6

IF NOT RETAINING CD PLAYBACK (changer remains connected) **skip to step 6**

5. Connect supplied 3.5mm audio cable (See Fig. 7) to "AUX" jack (See Fig. 8)
6. Route other end of 3.5mm audio cable to wherever AUX device will reside (within 3 ft.)



Fig. 7



Fig. 8

7. **Optional:** Drill a 15/64 or 1/4" hole in dash or panel, push aux jack shaft through and secure with nut (See Fig. 9)



Fig. 9

ALERT: Aux jack (See Fig. 8) may be left freestanding, but if mounted; ensure panel is **less than 4mm thick** otherwise shaft may not protrude enough to engage with nut. If necessary, use dremel, sander etc. to thin panel or choose alternate mounting location.

8. Secure microphone to headliner or visor using included clip (See Fig. 10)
9. Route microphone cable (10 ft. long) down side pillar, under steering column and into glove box area,
10. Connect microphone plug to module "MIC" input jack. (See Fig. 11)
Wind noise will negatively affect phone audio. Users are advised to install microphone away from wind/ventilation ducts etc.



Fig. 10



Fig. 11

11. Connect installation harness 16-pin plug (See Fig. 12) to module 16-pin connector (See Fig. 13)
Ensure plug is fully seated/locked in place otherwise it may disconnect.

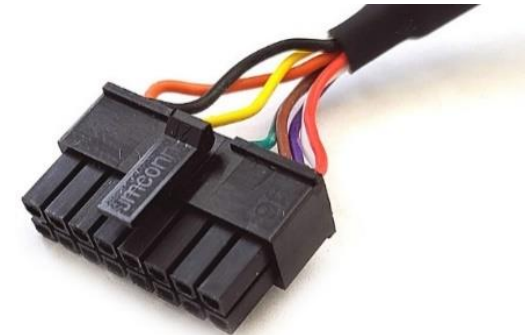


Fig. 12



Fig. 13

Optional USB extension cable installation

Note: 1. Optional 6 ft. USB dash mount extension cable is not required for operation, however it extends USB charging port (See **Fig. 16**) to dashboard, glovebox etc.

2. **The USB port supports charging only**

1. Drill a $\frac{3}{4}$ " hole to dash or panel using a step drill bit or equivalent (See **Fig. 14**)
As an alternative; use the included bracket (See **Fig. 18**) to mount USB without drilling.



Fig. 14

2. Fish USB cable terminal (See **Fig. 15** through hole created in step 1 and plug into USB port on module (See **Fig. 16**)



Fig. 15
USB cable



Fig. 16

3. Snap header (See **Fig. 17**) to surface until flush (See **Fig. 18**)



Fig. 17



Fig. 18

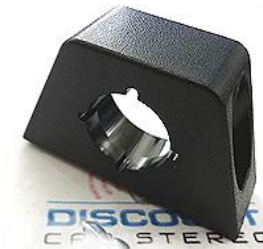


Fig. 19

Tuck and secure any extra wires from moving parts and proceed to next step

Bluetooth pairing:

Pairing varies among devices but basic steps are the same. This process is done upon initial install and will not have to be repeated

1. Turn ignition and radio "ON"
From your Bluetooth enabled device, turn the Bluetooth ON and search for Bluetooth devices.
 2. When a list of available Bluetooth devices appears on your Bluetooth device, select "DisCarSt" (See Fig. 20)
 3. Confirmation "tone" is heard on car speakers.
 4. The unit will automatically enter the BT Audio source and you can now start streaming audio from your Bluetooth enabled device.
- Note: If the mobile phone doesn't support SSP (Simple Secure Pairing) Profile, please enter the pass code of "0000"

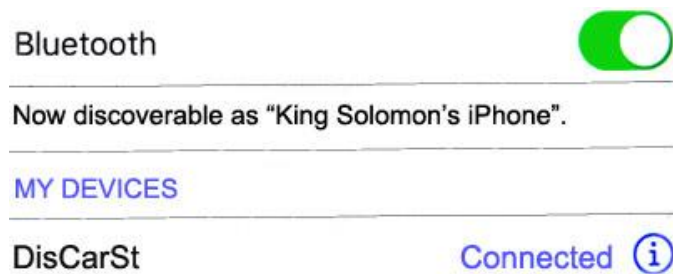


Fig. 20

Bluetooth operation

1. Turn ignition to "ACC" or "ON"
2. Turn radio ON.
3. Press "CD" button on radio to switch to Bluetooth mode
4. Launch smartphone music streaming application
5. Use remote control (See Fig. 21) or device built-in controls or touch screen for track selection, adjust volume, pause/play etc.
6. Place phone call or ask someone to call. To answer call; tap **Previous track** on remote control.
7. To end call, tap **Next track** remote control.
8. To switch to CD changer/AUX, tap **Pause/Play** button
9. To switch back to streaming; tap **Pause/Play** button
10. Use tapping action to adjust volume (+/-) (don't press and hold)
11. If correct operation is confirmed go ahead and reinstall radio.

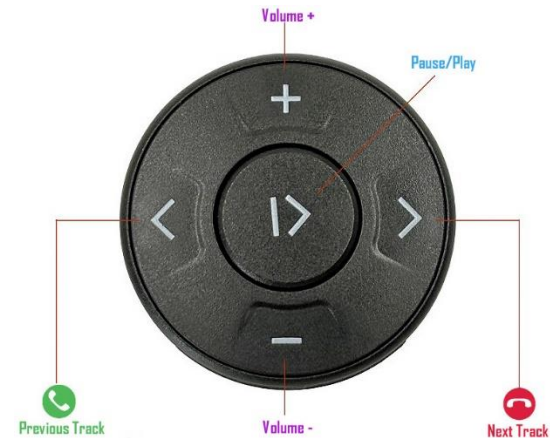


Fig. 21

3. If correct operation is confirmed go ahead and reinstall radio.

Warning: Playlist/Track selection *NOT* possible from Jaguar radio buttons. Use audio device built-in controls or included remote to access and control audio files.

Mercedes Bluetooth adapter comparison chart

Feature	A2D-MB	A2D-MBCD	BTH-MBCD	A2DIY-MB
CD changer retention	x	✓	✓ ²	x
CD changer required	x	✓	✓	x
3.5mm AUX input	x	x	✓ ²	✓ ²
USB charging port	x	x	Built-in	*
Mutes' audio system	*	*	*	*
Hands-Free profile	x	x	✓	✓
Streaming Audio	✓	✓	✓	✓
Wireless remote	**	**	✓	✓
Plug-n-play	✓	✓	✓	✓

* Radio must be in "AUX" Mode (Smartphone provides mute option)

** Optional

² Optional (user select option at checkout)

Warning: Caller ID and text are **not shown on radio display**. Operate Bluetooth device via wireless remote control, VR (voice recognition) or smartphone built-in controls. Radio buttons can be used to adjust playback level, set tone controls.

Frequently asked questions & troubleshooting

- My vehicle has a functioning 6-disc CD changer which I use to play CD's. Which option should I select when ordering?**
To retain CD changer playback simply select that option from [product page](#)
- My vehicle has a functioning 6-disc CD changer, but I no longer play CD's. Can I simply disconnect it?**
NO; For the BTH-MBCD to work, the 6-disc CD changer must remain connected. If you no longer listen to CD's; select AUX input instead; however, the 6-disc changer must be **functional and remain connected. If vehicle does not have a changer or if it malfunctions; this module does not apply. Purchase our [BTH-MB](#) instead.**
- Does the BTH-MBCD work in my 1999 S-Class with CD changer?**
NO. Mostly all 1999+ Mercedes CD changer is digital optic and not compatible with this module
- Can I control music streaming applications from radio buttons?**
NO; you must continue to use audio device built-in controls or included media button.
- How do I listen to CD's?**
Press CD button on radio. Ensure music streaming is paused. Control CD changer from radio as customary. To return to streaming or to receive phone call; press **Pause button or un-pause streaming from smart device.**
- Will radio mute when I receive or make a phone call?**
Radio will mute when in Bluetooth mode (CD). If in any other mode (e.g., AM/FM), radio will not mute. In addition, you must switch radio to "CD" (Bluetooth Mode) in order to hear caller on car speakers.
- Why is my second phone not able to pair with Bluetooth receiver?**
In order to pair a second phone make sure no other phone is connected. Once free from other devices the module will enter discovery mode.
- What's the difference between BTH-MBCD and BTH-MB?**
The BTH-MBCD requires a working CD changer and the BTH-MB does not.
- Is there a Bluetooth solution for 1999+ fiber optic radios/changers?**
YES; Purchase our [ISFM23](#) or [ISFM2351](#) .
- How do I activate Siri or Google Play?**
Use the same method for enabling voice activation on your device as you would in portable mode.
- Can I connect and play USB flash/thumb drive to optional USB port?**
NO; USB smart port is for **charging only.**

12. **Will my radio display phone number, song names etc.**
NO. This information is displayed on audio device only.
13. **How to I answer phone calls?**
 Tap PAUSE button on remote control or on smart device. Use same button to end call.
14. **Do I need to purchase optional noise filter?**
More than 97% of our installs required a filter and because of that we highly recommend adding one.
 Adding aftermarket accessories to the electrical circuit in older Mercedes could result in alternator noise (whine). A noise filter (See **Fig. 22**) is one way of eliminating these annoyances. Our optional noise filter (if ordered), will arrive pre-wired; however, if purchased at a later date, you must DIY. Click [here](#) to purchase our 3A noise filter seen below.



Fig. 22

15. **How do I DIY your noise filter?**
 Our noise filter (**Fig. 18**) has two input and output wire pairs. The input side received unfiltered power/ground signal from vehicle and output side passes filtered power/ground signal to module. The filter therefore is installed between the module and car by simply cutting power/ground wires about an inch away from power plug (black). Filter input pair connects to black plug side and filter output pair connect to module side.
16. **Do you offer a plug-n-play noise filter?**
YES. Our BT63-NF (**Fig. 22**) is able to replace the NF3A (See **Fig. 22**) as a plug-n-play filter. Simply connect the 16-pin installation plug see in **Fig. 13**.



Fig. 23

Disclaimer

- This product has no affiliation with Mercedes or Apple
- We recommend professional installation
- We're not liable for misuse of this product.

Email support@discountcarstereo.com

© 1995-Dec-24 Discount Car Stereo, Inc. All rights reserved. Information in this document is subject to change without notice. Other products and companies referred to herein are trademarks or registered trademarks of their respective companies or mark holders